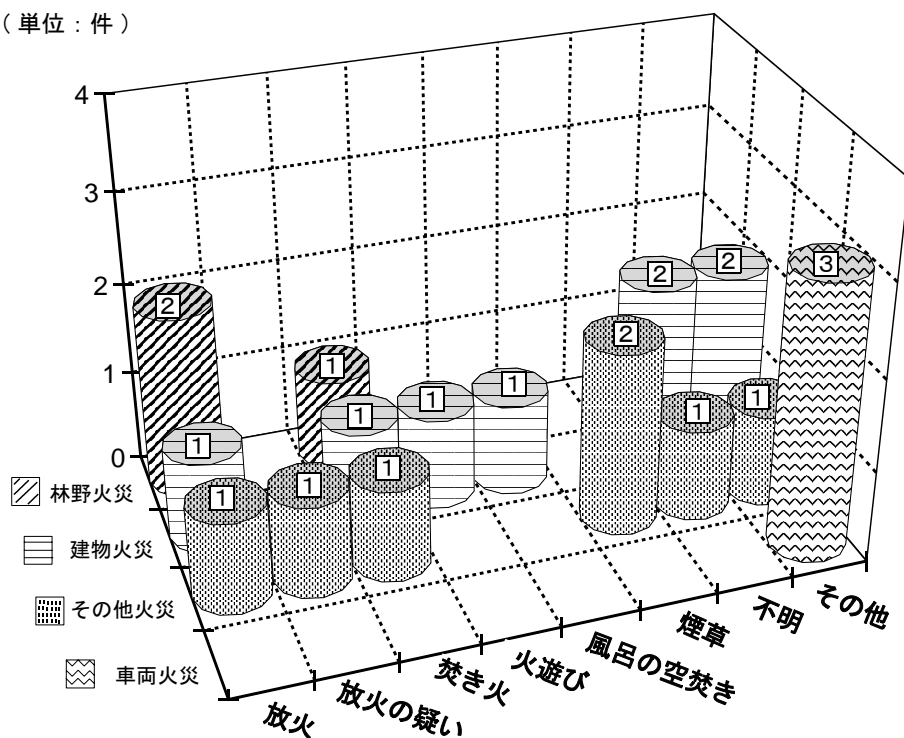


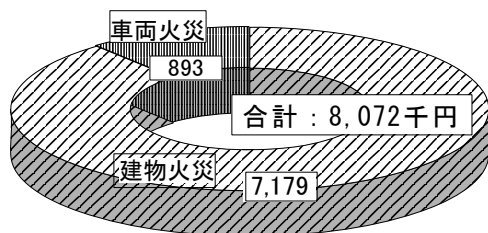
出火原因別火災発生状況

(単位：件)



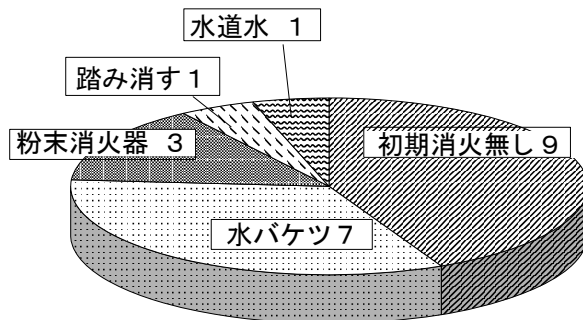
火災種別損害額

(単位：千円)



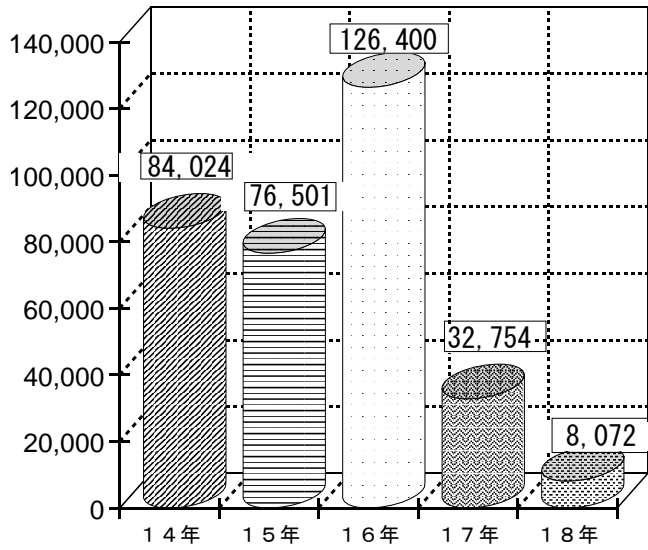
初期消火状況

(単位：件)



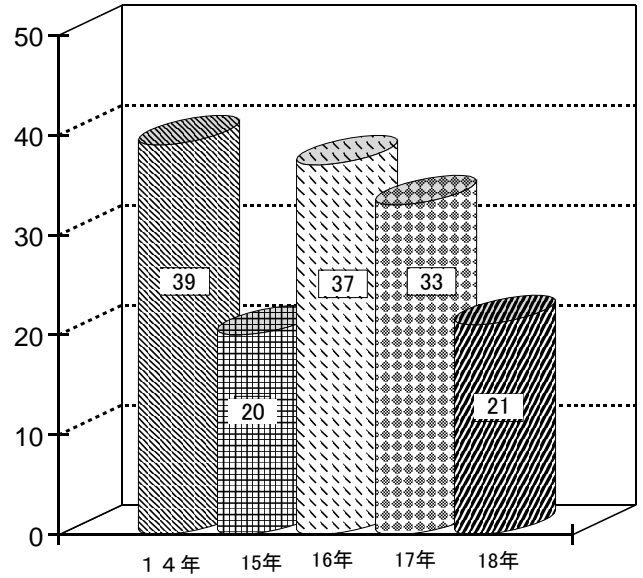
損害額の推移

(単位：千円)



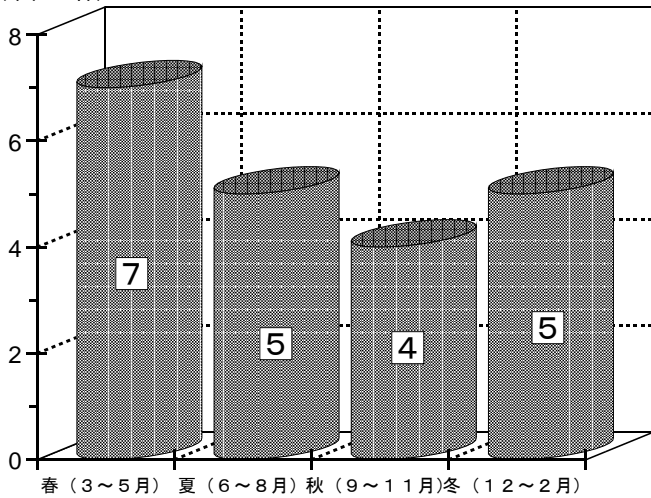
火災発生件数の推移

(単位：件)

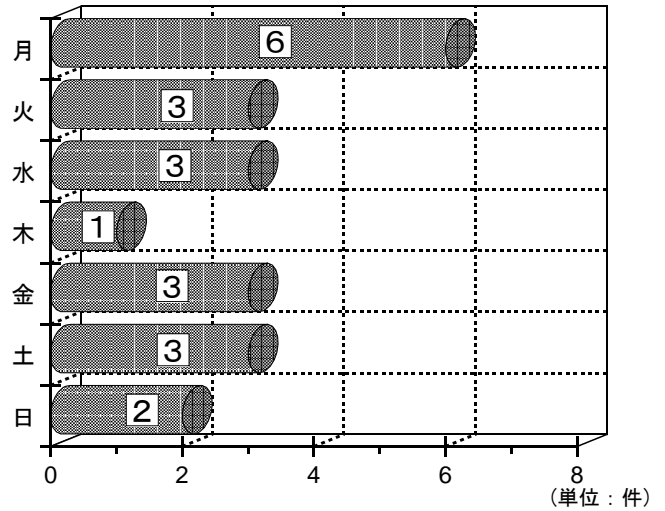


季節別火災発生状況

(単位：件)

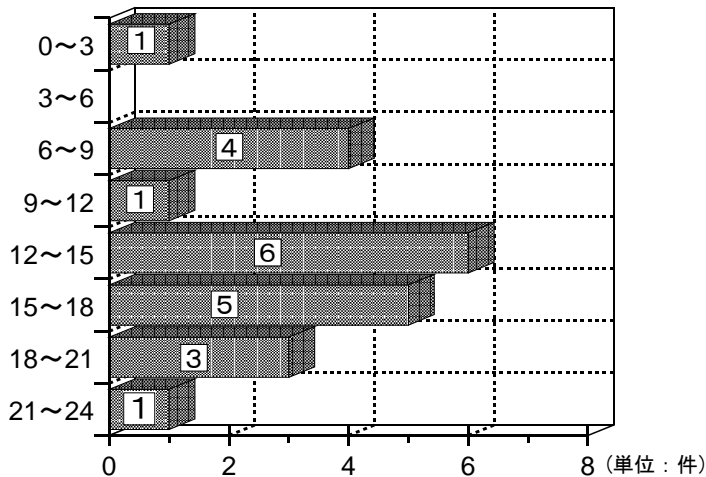


曜日別火災発生状況



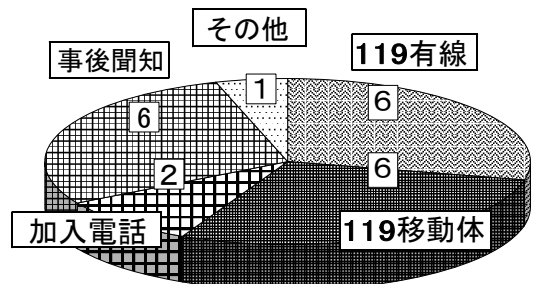
時間別火災発生状況

(単位：時)



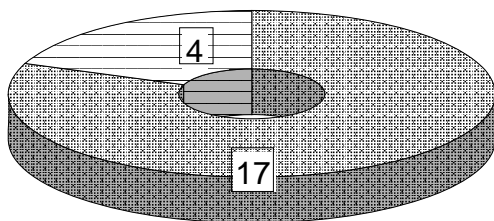
火災覚知状況

(単位：件)



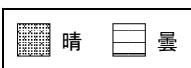
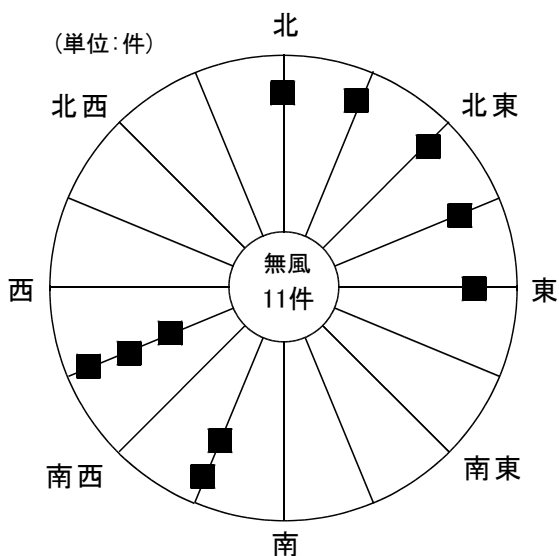
気象別火災発生状況

気象別

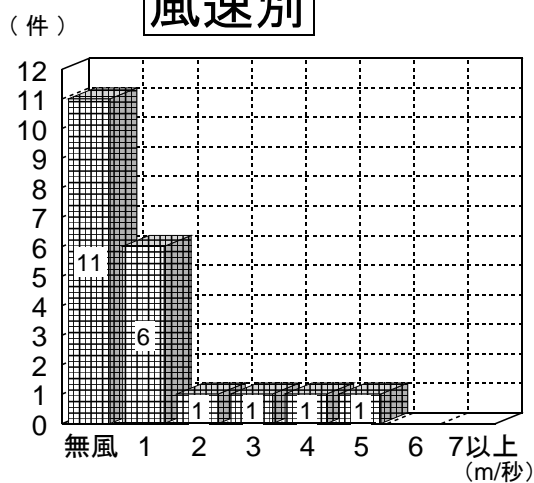


(単位：件)

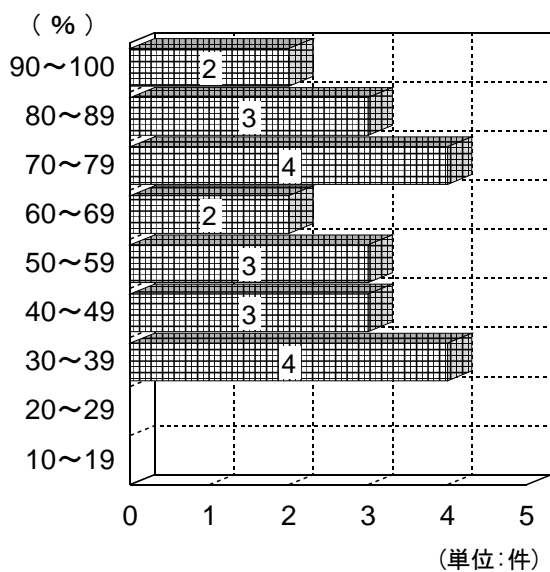
風向別



風速別



湿度別



気温別

